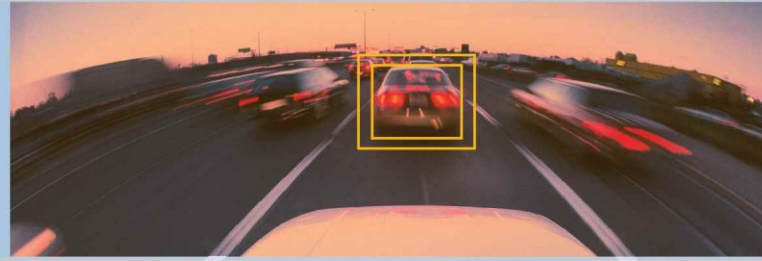


MOBILEYE C2-170

Our Vision. Your Safety.™



One second of driver distraction can result in a road traffic accident, drive safely with Mobileye every time



Modern, comprehensive, single camera solution designed for accident prevention and mitigation including:

- ⊖ 3 Driver assistance application in one system
 - Forward Collision Warning (FCW) – Both in Highway and Urban FCW
 - Lane Departure Warning (LDW)
 - Headway Monitoring and Warning

- ⊖ Based on Mobileye's acclaimed vehicle detection and lane detection technologies

- ⊖ Unique data logging abilities

- ⊖ High intensity visual indications via LED display, offering:

- Vehicle detection indication
- Gauge for headway value monitoring
- Color-coded visual headway alerts
- Visual FCW and LDW alerts

- ⊖ Fits all vehicle types; passenger cars, fleet vehicles and all others

- ⊖ High availability operating day and night in almost every weather condition

Technical Specification

Even 2 seconds of distraction while answering the mobile phone, checking the rear view mirror, turning around to the kids, or driving while fatigued can lead to a road accident.

The Mobileye C2-170 is a camera-based safety solution for accident prevention and mitigation. The system includes a smart camera located on the front windshield inside the vehicle. It utilizes Mobileye's vehicle detection and lane detection technologies to measure the distance ('Headway') to vehicles and to lane markings, providing the driver with timely alerts.

The Mobileye C2-170 is never distracted, always looking forward and ready to warn the driver of sudden danger.

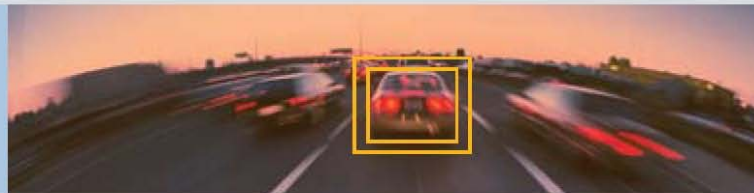
System Components

- A windshield-mounted vision sensor unit with a compact High Dynamic Range CMOS (HDRC) camera and SeeQ® image processing board
- High-quality audio alert buzzer
- User-friendly, high visibility EyeWatch1 Display and control unit, for visual directional warnings and numerical headway measurement display, has customization options.

Full Specifications

Electrical Characteristics	
Input Voltage	12-28VDC
Input current (full operation)	12v → 350mA, 24v → 180mA
Input current (Stand-By Max)	12v → 10mA, 24v → 10mA
Max Power Consumption	5.2W

MOBILEYE C2-170



SeeQ Buzzer (camera unit)	
Physical Characteristics	
Length:	68mm
Width (without lens):	35mm
Height:	39mm
Weight:	94g
Color:	Black
Case Material:	Aluminum/plastic
Cable Length:	3m
Cable Diameter:	4.8mm
Electrical Characteristics	
Input Voltage:	12-28VDC
Input current:	12v → 220mA, 24v → 120mA
Environmental Characteristics	
Operating Temperature:	-20°C to +80°C
Storage Temperature:	-40°C to +105°C
Vision Sensor	
Vision Sensor:	Micron MT9V022 (1/3") Monochrome Wide VGA
Array Format:	Total: 752H x 480V - Active pixels: 640H x 480V
Optical Format:	1/3"
Pixel Size:	6.0µm x 6.0µm
f/stop:	2.0
Dynamic Range:	>55dB linear; >80dB-100dB in HiDy mode
Shutter type:	Global shutter—TrueSNAP™
Responsivity:	4.8 V/lux sec (550nm)
Angle of view:	40° (horizontal)
Focus range:	5m to infinity
AGC:	Automatic Gain Control of the image sensor for high dynamic range
Audio Buzzer	
SPL Minimum	86dB @ 10cm
EyeQ1 Vision Processor	
110 MHz clock rate running seven parallel processes	
Two ARM946E 32bit CPUs with DSP extensions	
Four 64bit Vision Computing Engines (VCE)	
Eight channels DMA	
64bit width 288KB on-chip SRAM	

EyeWatch Display Unit		
Physical Characteristics		
Diameter:	49mm	
Depth:	24mm	
Depth (leg closed):	29mm	
Depth (leg open):	66mm	
Weight:	46g	
Color:	Black	
Case Material:	Plastic	
Cable Length:	2m	
Cable Diameter:	3.1mm	
Electrical Characteristics		
Input Voltage:	5VDC	
Input Current:	500mA	
Environmental Characteristics		
Operating Temperature:	-20°C to +80°C	
Storage Temperature:	-40°C to +100°C	
Operating Humidity:	95%	
Display Characteristics		
Viewing Angle:	120 Deg	
Display colors:	Red, White, Green	
Intensity	Red:	10mcd (min)
	White:	40mcd (min)
	Green:	15mcd (min)

Mobileye

Our Vision. Your Safety

www.mobileye.com

Mobileye Technologies Limited. All rights reserved 7/2009. Mobileye®, SeeQ® and EyeQ® are trademarks of Mobileye Technologies Limited.

Specifications are subject to change without notice.